

What's your diagnosis???

#### Signalment

Species	Canine
Breed	Japanese Chin
Sex	Male Castrate
Age	5 yrs

#### Presenting Complaint

Ataxia, lameness of right hind limb

#### History

Dog presented for ataxia and lameness of the right hind limb. Forelimb reflexes were within normal parameters. He was hyper-reflexive on his hind limbs. He was eating, defecating, and urinating on his own. Suspect lesion T3-L3.

#### Plan

CBC and biochemistry. TL spinal films and tentative surgery following were scheduled. Dog placed on Hydromorphone (PRN) and famotidine.

#### CBC

Leukocytosis	19.0	↑	(6-17)
Neutrophilia	17.5	↑	(3-11.5)
Lymphopenia	0.4	↓	(1.5-5)
Monocytosis	1.1	↑	(0.1-0.8)

#### Chemistry

Increased ALT	210	↑	(28-171)
Increased ALP	294	↑	(1-142)

#### Interpretation

CBC changes: most likely due to acute inflammation

Increased ALP: due to cholestasis,

Drug induced,

increased osteoblastic activity with a primary bone tumor

Increased ALT: due to hepatocyte damage,

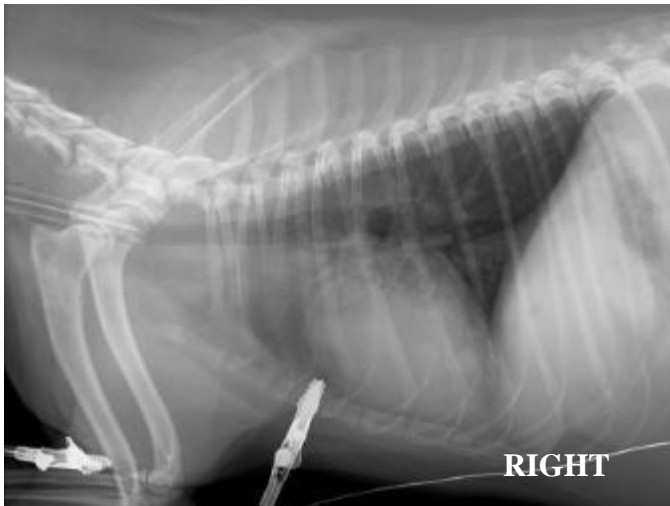
Drug induced,

Skeletal muscle damage

Ventrodorsal View



Lateral Views



Left Humerus



Thoracic Spine

