

ALL THINGS BLV



June 1st, 2024

Hilton Garden Inn Manhattan, KS

KANSAS STATE
UNIVERSITY

MICHIGAN STATE
UNIVERSITY

Welcome to the 2024

ALL THINGS BLV *Manhattan, KS*



This conference strives to provide a welcoming and collaborative gathering place for sharing ideas, successes, challenges, and needs regarding BLV – while providing career development, mentorship, and training to early career individuals and students.

The international gathering for discussion among producers, veterinarians, industry representatives, extension specialists, and researchers allows for appropriate and focused developments to happen which benefit all involved.

We are pleased that you could join us, and we look forward to all future collaborations and advancements gained as a result of hosting this conference.

Table of Contents



Agenda	4
Featured Keynotes	8
Committe Information	9
Session 1: Bovine Leukemia Virus: Navigating Transmission, Infection, and Diagnosis	
Session 2: BLV in the Herd, How to Get Rid of it.	
Session 3: What We Learned Along the Way: A BLV Field Trial in Dairy	
Session 4: Bovine Leukemia Virus in Beef Cattle: Sexual Transmission and Cow Survivability	
Session 5: Practical BLV Eradication Measures for Commercial Dairy Farms.	
Session 6: BLV Prevalence in Northeast Kansas: What We Have Learned and Future Reasearch.	
Future Opportunities	

All Things BLV Schedule

June, 1st

<i>Time</i>	<i>Event/Session</i>
7:00 - 8:00 am	Registration
8:00 am	<i>Welcome</i>
8:10 - 9:10 am	<i>Bovine Leukemia Virus: Navigating Transmission, Infection, and Diagnosis.</i> Kelly Sporer, PhD, Records Analysis Consultant- Central Star Laboratories Detailed summary of virology, focusing on molecular mechanisms, genetics, epidemiology, impacts of disease, transmission, and current management or control methods of bovine leukosis.
9:10 - 9:35 am	<i>Break</i>
9:35 - 10:35 am	<i>BLV in the Herd, How to Get Rid of it.</i> .Frank van de Meer, DVM, PhD, University of Calgary, Veterinary Medicine Various strategies, hurdles and opportunities for Bovine Leukemia Virus control will be discussed. What is really needed to make this successful? Different conventional and new methods to control this virus will be presented.
10:35 - 11:35 am	<i>What We Learned Along the Way: A BLV Field Trial in Dairy Cows.</i> Kelly Sporer, PhD, Records Analysis Consultant- Central Star Laboratories Building on previous field trials investigating prevalence of BLV, additional commercial dairy herds were recruited to validate CentralStar's SS1 BLV PCR assay. Cows were tested biannually by milk ELISA; BLV-positive cows were sampled to determine proviral shedding in blood. Trends over time were shared with producers while implementing custom management strategies for each farm.
11:35 - 1:00	<i>Lunch</i>
1:00 - 2:00 pm	<i>Bovine Leukemia Virus in Beef Cattle: Sexual Transmission and Cow Survivability.</i> Jen Roberts, DVM, Professional Services Veterinarian, Boehringer Ingelheim Animal Health
2:00-3:00 pm	<i>Practical BLV Eradication Measures for Commercial Dairy Farms.</i> Don Niles, DVM, CO-Owner of Dairy Dreams LLC, Casco, WI
3:00-2:25 pm	<i>Break</i>
3:30-4:30 pm	<i>BLV Prevalence in Northeast Kansas: What We Have Learned and Future Research.</i> Shaun Huser, DVM, Clinical Associate Professor-Livestock Services, Kansas State University College of Veterinary

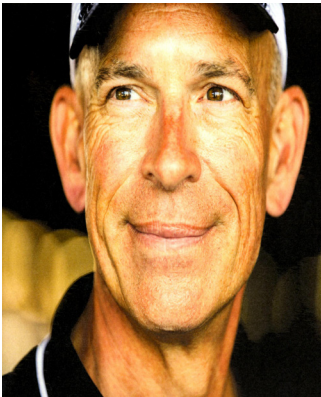
Speakers



Shaun Huser, DVM, Clinical Associate Professor-Livestock Services, Kansas State University College of Veterinary Medicine

Dr. Huser graduated from Kansas State University with a DVM in 2004. From 2004 to 2017, Dr. Huser was in mixed animal practice, 11 years of which were spent at a mixed animal practice in Northeast Illinois. In 2017, Dr. Huser joined the faculty at Kansas State University, College of Veterinary Medicine. He is a field service clinician/instructor at the KSU

Veterinary Health Center and also teaches two elective courses designed for large and mixed animal veterinary students, Advanced Bovine Palpation and Bull Breeding Soundness. Over the last three years, Dr. Huser has collaborated with the KSU diagnostic laboratory, Michigan State University, and CentralStar laboratories in the area of Bovine Leukemia Virus in beef cattle.



Don Niles, DVM, CO-Owner of Dairy Dreams LLC, Casco, WI

Dr Niles graduated from the University of Minnesota with a D.V.M. in 1982. From 2001 to 2019 Don was the co-owner and manager of Dairy Dreams LLC, a 3000 cow dairy in NE Wisconsin. Since 2019 Don has been the Dairy Operations Manager for all the Pagel's Family Businesses. Dr Niles has been a featured speaker, both nationally and internationally on topics relating to proper cow

care and practices that will help maintain healthy animals and the strong reputation of dairy products as being safe and nutritious for the consuming public.

Speakers



Jen Roberts, DVM, Professional Services Veterinarian, Boehringer Ingelheim Animal Health

Dr. Jen Roberts is a Professional Services Veterinarian with Boehringer Ingelheim Animal Health. Dr. Roberts grew up on a dairy farm in southern Michigan where she raised show cattle and participated in daily farm management. She attended Michigan State University and received her DVM degree in 2005. Dr. Roberts practiced in a food animal practice in southwest Wisconsin where her work focused on herd health and reproductive management of beef and dairy cattle. After 7 years in practice, including 4 years as a practice owner, she returned to Michigan State University to teach bovine and small ruminant reproduction and dairy production medicine. In 2019, she joined Boehringer Ingelheim Animal Health. She continues to hold an adjunct professor appointment at Michigan State University. Her professional interests include reproduction, calf health management, and education and training of farm personnel. Dr. Roberts remains active in the family farm where they now raise Holstein steers and maintain a small cow/calf operation.



Kelly Sporer, PhD, Records Analysis Consultant-Central Star Laboratories

Kelly Sporer obtained her BS in Animal Science from Michigan State University and her PhD from University College Dublin, investigating the effects of transportation stress on cattle immune function. From 2017-2022, she was a Research Scientist at CentralStar Cooperative, leading field trials, coordinating custom diagnostic testing strategies, and providing technical support. Now as a Records Analysis Consultant, Kelly analyzes data to troubleshoot and monitor herd performance, bringing together key personnel to identify challenges and opportunities for dairy farms.

Speakers

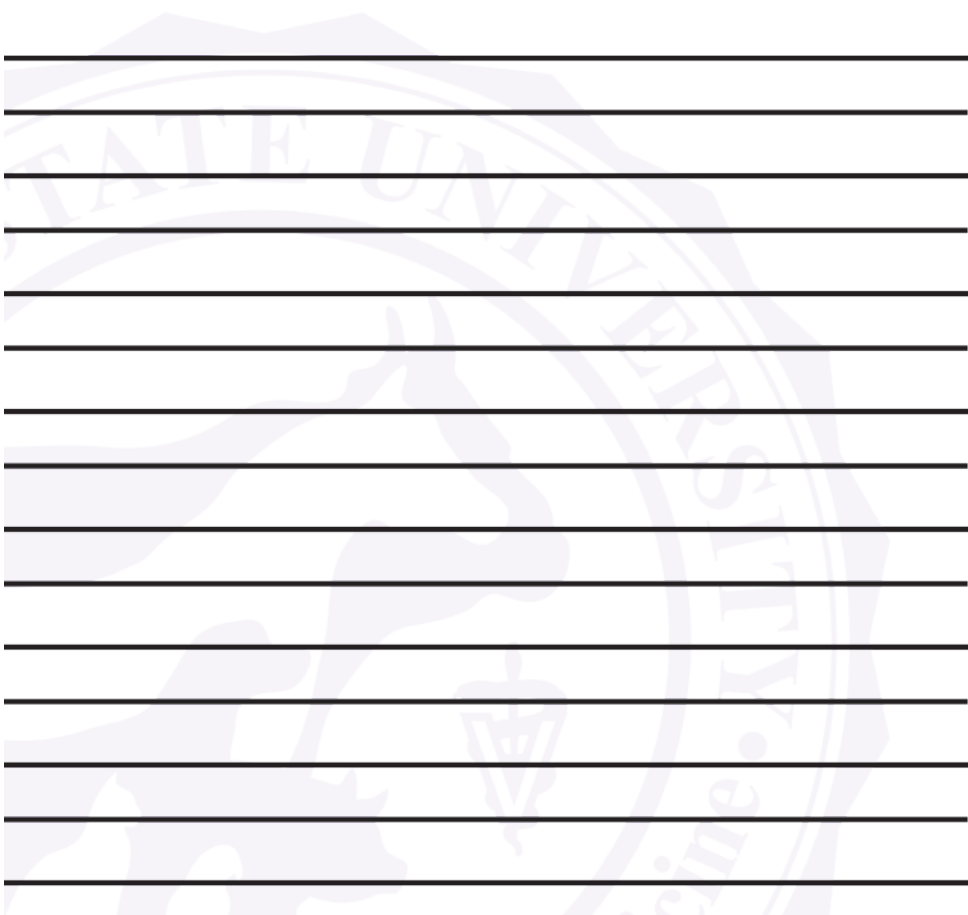


Frank Van der Meer, DVM, PhD, University of Calgary, Veterinary Medicine

Frank van der Meer graduated from the Faculty of Veterinary Medicine at Utrecht University in the Netherlands in 1996 and completed his PhD on the activity of antiviral compounds to Retro- and Nidoviruses in 2007. In 2008 he joined the Faculty of Veterinary Medicine in Calgary. His research focuses on bovine viruses such as bovine viral diarrhea virus, bovine leukemia virus and wildlife viruses in the Canadian arctic. He collaborates with researchers in Tanzania to study animal and human pathogens, where he also led a field school in Ngorongoro and the Lake zone

Notes





**ALL
THINGS
BLV**



Thank you!